



National  
Kidney  
Foundation® of  
Michigan

# 2019-2020 Michigan Guide for Policy Makers and Stakeholders

In the state of Michigan...

## 1 in 7 adults

have chronic kidney disease (CKD)  
and **most don't know it**<sup>1</sup>

Many adults in Michigan have risk factors for  
chronic kidney disease...

**Over 2.7 MILLION**<sup>2</sup>  
have prediabetes

**1.09 MILLION**<sup>2</sup>  
have type 2 diabetes

**Over 3 MILLION** projected cases of **prediabetes** and  
**Nearly 2 MILLION** projected cases of **diabetes** by 2030<sup>3</sup>

**35%** have high blood pressure<sup>4</sup>

**33% of children** are obese or overweight<sup>5</sup>

Sources:  
1. CDC, 2019 and US Census Bureau, 2010  
2. American Diabetes Association, 2019

3. Institute for Alternative Futures, 2015  
4. CDC BRFSS and MiBRFSS, 2017  
5. Child and Adolescent Health Measurement Initiative, 2017

## You can take action and support solutions:



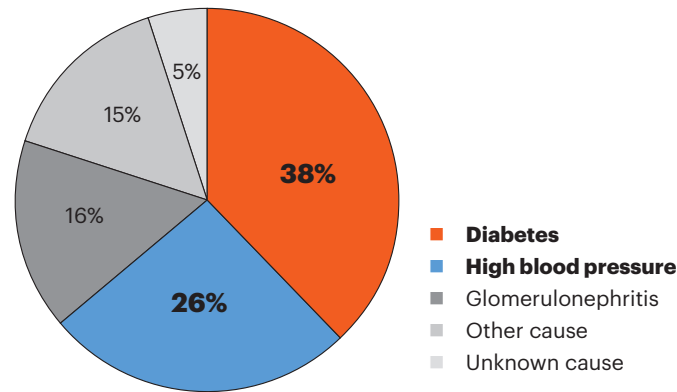
National Kidney Foundation®  
of Michigan

[www.nkfm.org](http://www.nkfm.org)  
**800.482.1455**



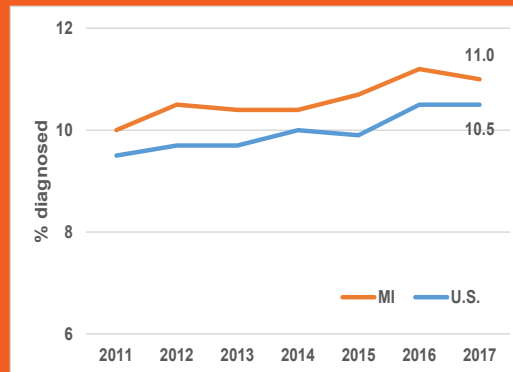
# NKFM is leading the charge against chronic kidney disease (CKD)

Reported Causes of Kidney Failure in the United States



Source: Centers for Disease Control and Prevention, 2019

Diabetes in Michigan vs. U.S.



Source: CDC BRFSS and MiBRFSS, 2017

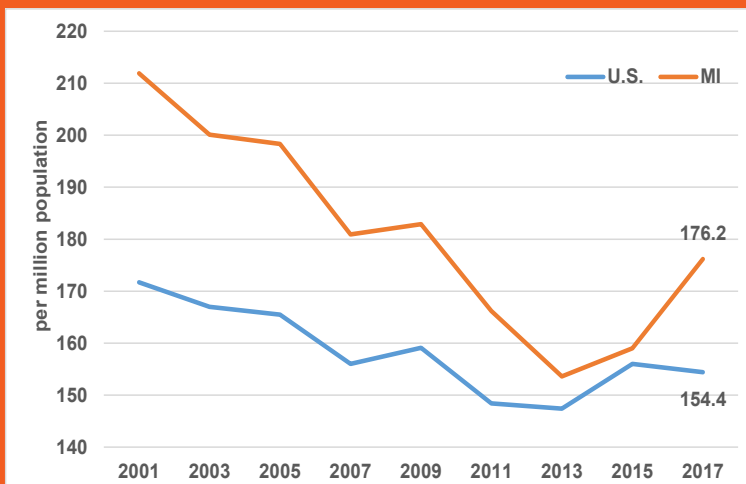
**49.9%** of the adult population in Michigan has either **prediabetes** or **diabetes**.



Every year, an estimated **46,000** people in Michigan are diagnosed with diabetes.

Source: American Diabetes Association, 2019

New Cases of Kidney Failure in Michigan from Diabetes



Source: 2019 USRDS Annual Data Report, Incidence Table A.9(2)\*

\*Data after 2013 includes incidence of ESRD for diabetes patients, U.S., unknown age dropped. Data after 2014 includes incidence of ESRD for diabetes patients, U.S., unknown sex and ethnicity dropped, unknown and other/multiracial race dropped.

**NKFM annual program cost savings in Michigan:**

**\$5,260,000**

Sources: Centers for Medicare and Medicaid Services (CMS), 2013 and 2016 University of Memphis School of Public Health, 2014

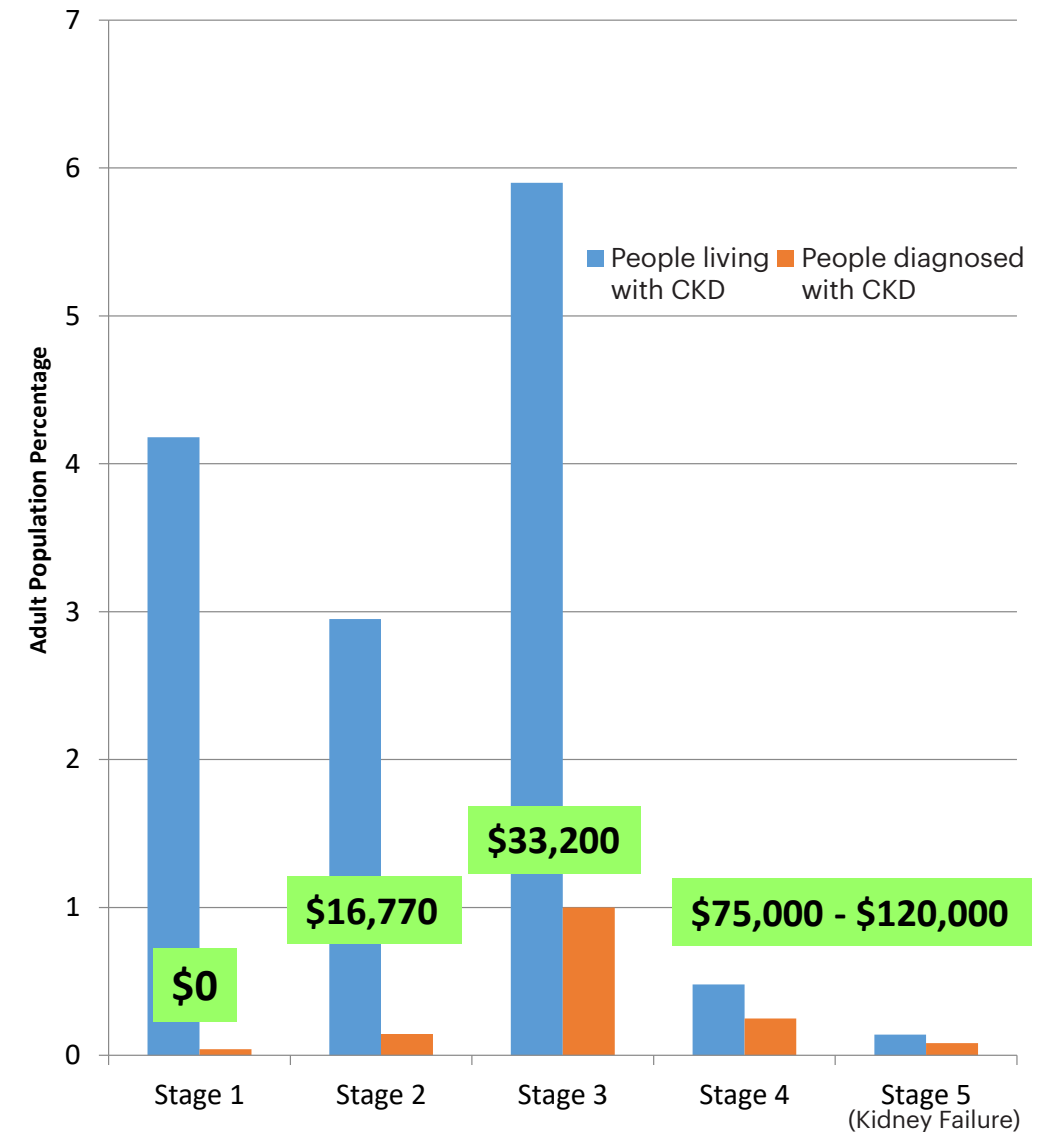
# NKFM is leading the charge against chronic kidney disease (CKD)

## People Living with CKD Compared to People Actually Diagnosed with CKD

Most people are not diagnosed with **CKD** until stage 4 or 5 when it's too late to prevent **kidney failure**.<sup>3</sup>

People with **CKD** are more likely to die of a **cardiovascular event** than reach kidney failure.<sup>3</sup>

Sources:  
 1. 2015 USRDS Annual Data Report  
 2. Golestaneh, L., et al. American Journal of Managed Care, 2017, 23(10): p. S161.  
 3. Szczech, L.A., et al. PloS one, 2014, 9(11): p. e110535.



## Kidney Disease and Michigan Medicaid

Description	Members with Diagnosis	2017 Spend*
End Stage Renal Disease (Kidney Failure)	4,220	\$223,100,000
Chronic Kidney Disease (CKD)	36,099	\$899,700,000
Acute Kidney Failure (Injury)	38,696	\$1,170,000,000
<b>All Kidney Conditions</b>	<b>60,174</b>	<b>\$1,503,900,000</b>

\*Spend is for all care for the member during CY 2017 for any diagnosis and members are in more than one category. Payformance Solutions, 2019.

# The NKFM is committed to excellence in organizational performance

The National Kidney Foundation of Michigan is happy to provide hope and help across Michigan and we're proud to be recognized for our success.



The NKFM is proud to have earned the **Platinum Level Rating** from GuideStar, the world's largest source of nonprofit information.

To reach the Platinum level, we added extensive information to our GuideStar Nonprofit Profile including in-depth financial information; qualitative information about goals, strategies, and capabilities; and quantitative information about results and progress toward our mission.

**This rating shows the NKFM is committed to transparency and to giving donors and funders meaningful data to evaluate nonprofit performance.**



For the **12th** consecutive year, the National Kidney Foundation of Michigan (NKFM) has been recognized for its sound fiscal management and performance by receiving the coveted 4-star rating from Charity Navigator.

Charity Navigator is the leading charity evaluator in America and only gives the 4 out of 4-star ratings to *25% of the charities* it evaluates.

**At a 94.96 rating, the NKFM is in the top 1% of all nonprofits in America.**



National Kidney Foundation®  
of Michigan

[www.nkfm.org](http://www.nkfm.org) | 800.482.1455