



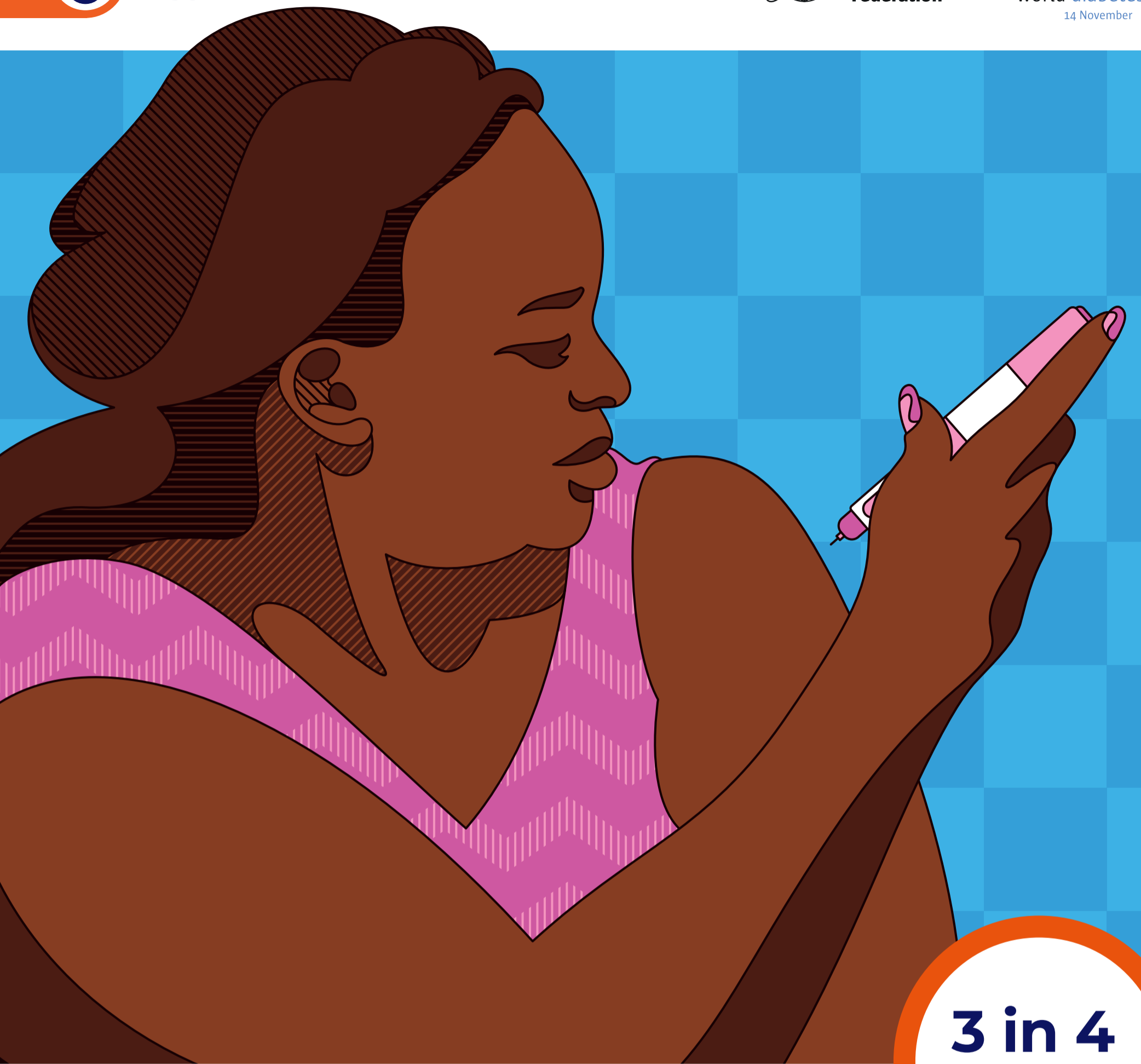
**ACCESS TO
INSULIN**



**International
Diabetes
Federation**



world diabetes day
14 November



3 in 4

people with diabetes live
in low- and middle-income
countries

100 years after its discovery, millions of people with
diabetes cannot access the insulin they need.

IF NOT NOW, WHEN?

Join our campaign at:
www.worlddiabetesday.org
#IfNotNowWhen

